



## ClientBase – iZento Connector Software Update

api.izento.com

Username: iZentoGal

Password: ●●●●●●●●

Remember

[Forgot your password?](#)

To begin Download:  
- Go to [api.izento.com](http://api.izento.com)  
- Login

PRODUCTION	Journal	Itineraries	API	Account
Itineraries			Test XML Developer's Overview Download ClientBase Connector	

Select the appropriate release, then click [Download](#).

PRODUCTION   Journal   Itineraries   API   Account

### ClientBase Connector v4.0 Release

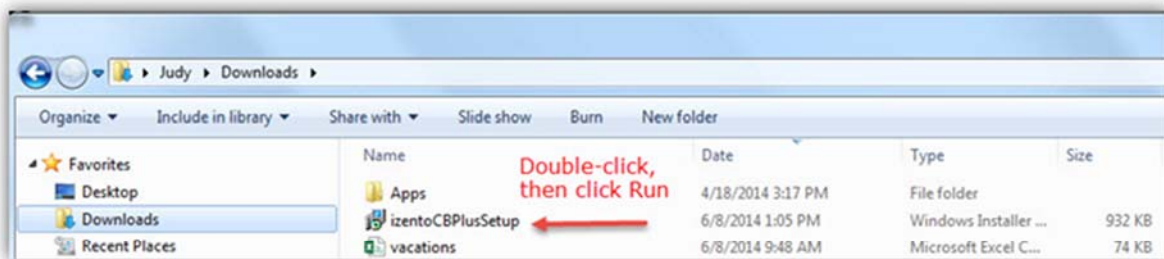
- Supports ClientBase (CBW) Release 4.0
- Requires Traveler names for air and rail
- Requires Tour Name
- Various bug fixes

[Download ClientBase Connector 4.0](#)

### ClientBase Connector v1.5 Release

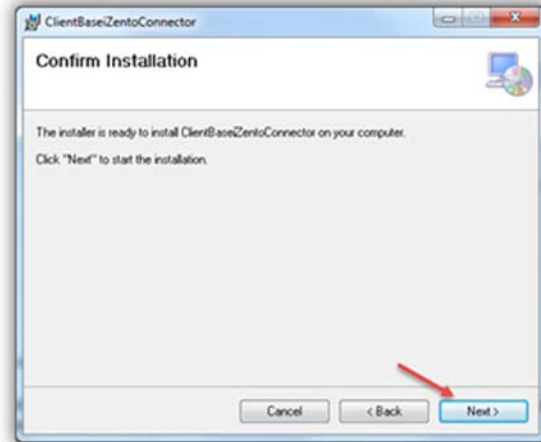
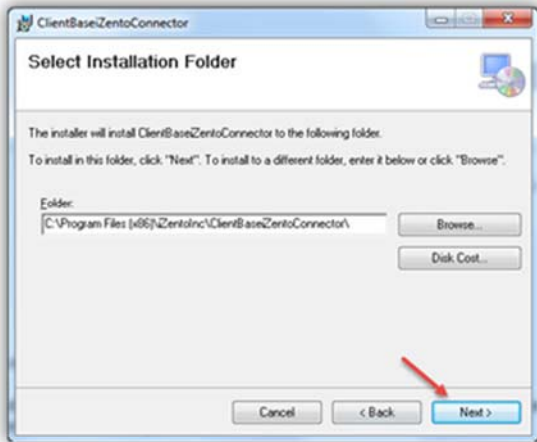
- Supports ClientBase (CBW) pre-4.0 releases
- Expanded Tour Support
- New Agent Tools
- Various bug fixes

[Download ClientBase Connector 1.5](#)



**You are ready to install the new software release.**





**Step 1:**  
ClientBase  
Connection

**Step 2:**  
iZento Transfer  
Settings

**Step 3:**  
Task Scheduler

**Step 4:**  
Click Save

**ClientBase - iZento Connector**  
Copyright © iZento, Inc.

**ClientBase Connection**

Agency Name: \_\_\_\_\_  
 Full Alias PathName: \_\_\_\_\_  
 Username: \_\_\_\_\_  
 Password: \_\_\_\_\_  
 Sync Copy:  Duration (min): \_\_\_\_\_

**Verify CB Connection**

**iZento Transfer Settings**

iZento Server: api.izento.com  
 Username: \_\_\_\_\_  
 Password: \_\_\_\_\_

**Verify iZ Connection**

**Task Scheduler**

Task Name: ClientBase to iZento Connector  
 Description: Connects Res Card data from your server with iZento's Trip Optimizer™ to output a fully customized travel itinerary.  
 Repeat Task (Min): 5 minutes  
 Program To Run: C:\Program Files (x86)\iZento\inc\ClientBaseZ...

**Create Scheduler**

**Save** **Exit**

Verify CB  
Connection

Verify iZ  
Connection

Create  
Scheduler

Save

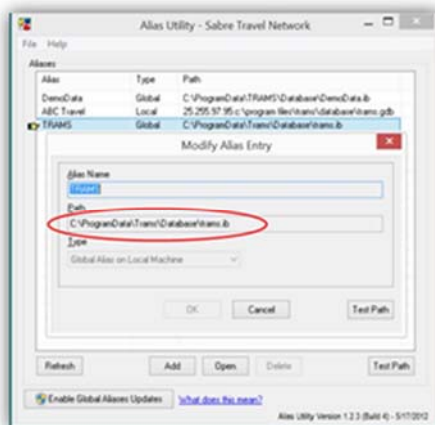
- Click Start → All Programs
- DoubleClick the Trams folder
- Select Alias Utility
- Copy and paste your Path into the Full Alias PathName field in the set up page.

See instructions next page

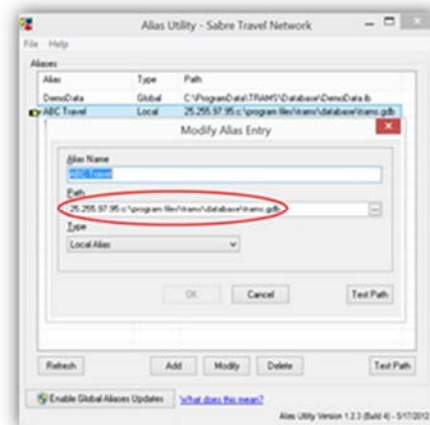


- Path format depends on the location of your Trams database
- Use the Alias path of the computer where you are installing iZento Connection
- Select the Alias for YOUR Trams Database
- Alias Remote Utilities will include your IP address

Alias Utility: Main



Alias Utility: Remote



## **\*Contact us to report update complete**

- Email: [support@izento.com](mailto:support@izento.com)
- Phone: 925.274.1995
  - *M-F West Coast Business Hours*
- Assistance available, as needed



*\*We track your software version to provide better support*